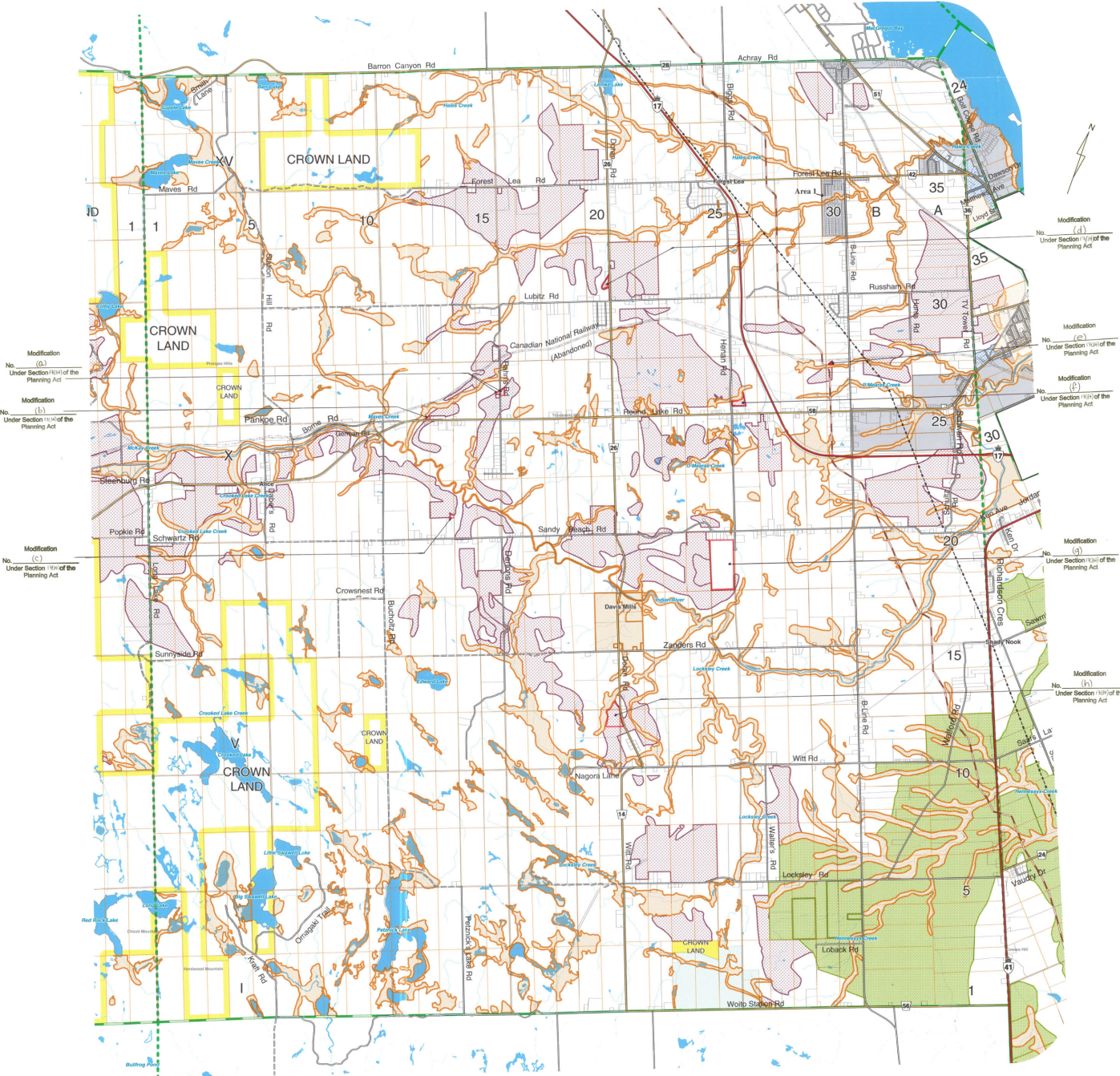


SCHEDULE 'A' to the OFFICIAL PLAN for the TOWNSHIP OF LAURENTIAN VALLEY

(Schedule 'A-1' - Township of Alice)



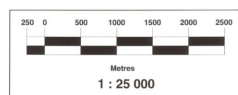
Modification (a) Under Section 19(1) of the Planning Act
 Modification (b) Under Section 19(1) of the Planning Act
 Modification (c) Under Section 19(1) of the Planning Act

Modification (d) Under Section 19(1) of the Planning Act
 Modification (e) Under Section 19(1) of the Planning Act
 Modification (f) Under Section 19(1) of the Planning Act
 Modification (g) Under Section 19(1) of the Planning Act
 Modification (h) Under Section 19(1) of the Planning Act

Legend

AGRICULTURE	ENVIRONMENTAL PROTECTION	RESIDENTIAL	PROVINCIAL HIGHWAY
SUBURBAN	ENVIRONMENTAL PROTECTION - EXCEPTION ONE	HYDROGRAPHY	COUNTY ROAD
COMMERCIAL	SHOPPING CENTRE COMMERCIAL	CROWN LAND	TOWNSHIP ROAD
WASTE DISPOSAL	SHOPPING CENTRE COMMERCIAL - Area One	RURAL	SEASONAL, PRIVATE or CROWN ROAD
MINERAL AGGREGATE RESOURCE	COMMUNITY FACILITY	INDUSTRIAL	RAILWAY
			TOWNSHIP BORDER
			GEOGRAPHIC TOWNSHIP BORDER

This is Schedule 'A-1' to the Official Plan Passed the 24th day of July, 2002
 Signatures of the Signing Officers:
 Reeve:
 Clerk:



Data Sources: County of Renfrew, Ministry of Natural Resources, JPS Consultants Inc., GeoSolutions Consulting Inc.