

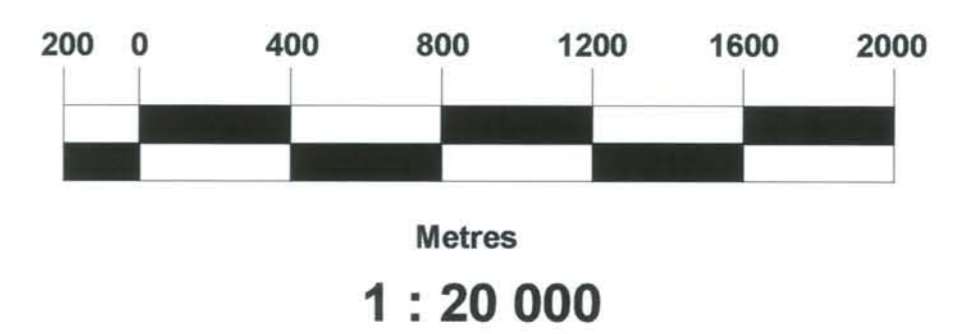
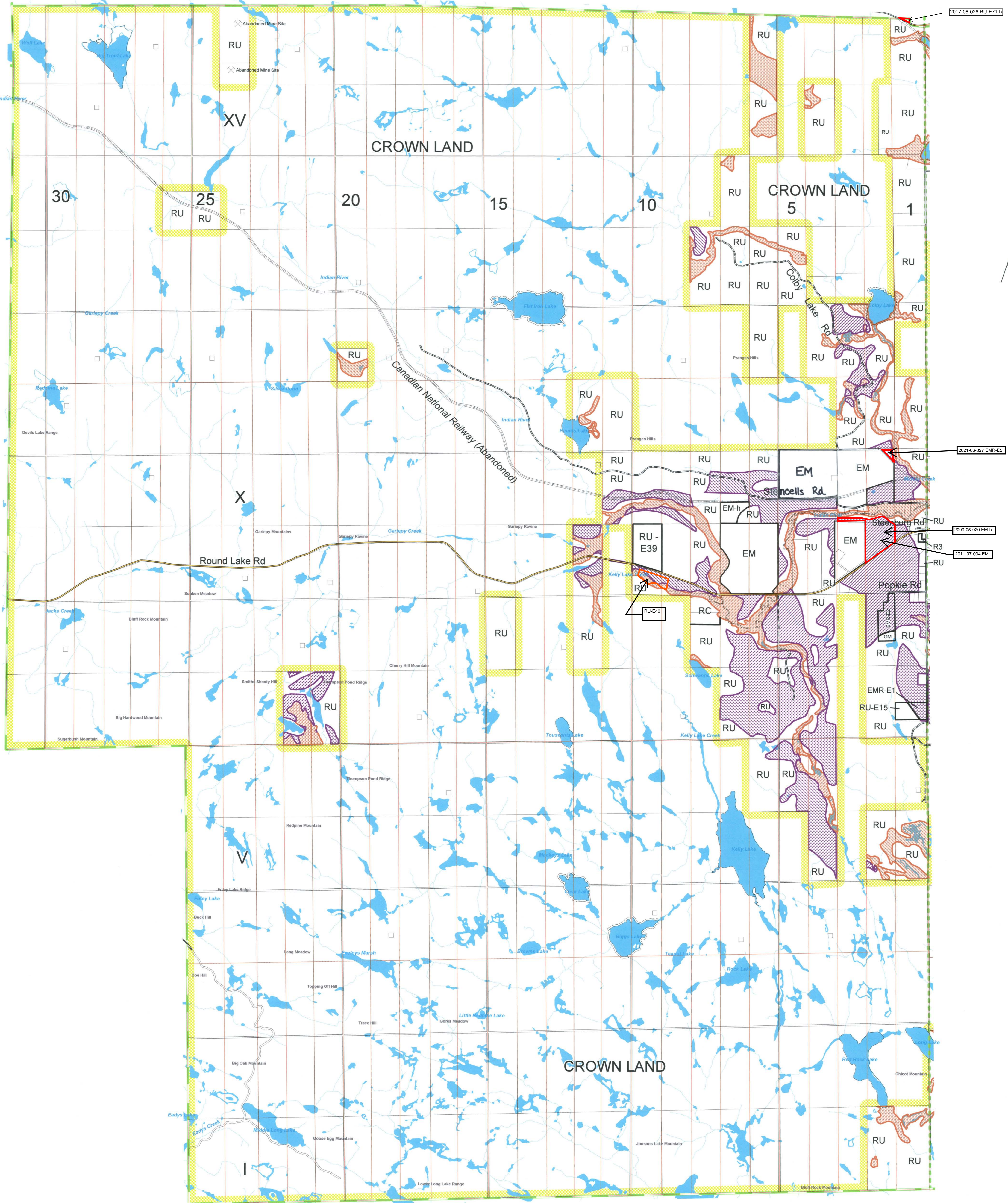
SCHEDULE 'A' to the COMPREHENSIVE ZONING BY-LAW for the TOWNSHIP OF LAURENTIAN VALLEY

(Schedule 'A-2' - Township of Fraser)



This is Schedule 'A-2' to the Comprehensive Zoning By-Law Passed the 9th day of April, 2008
Signatures of the Signing Officers:

Jack Wilson Mayor
[Signature] Clerk



Map Consolidation
June 15, 2021

DATE CONSOLIDATED: May 1

Jp2g Consultants Inc. GeoSolutions Consulting

Legend

	AGRICULTURE (A)		PROVINCIAL HIGHWAY		GEOGRAPHIC TOWNSHIP		ADULT COMMERCIAL		LIGHT INDUSTRIAL		RESIDENTIAL TWO
	ENVIRONMENTAL PROTECTION (EP)		COUNTY ROAD		NATURAL GAS PIPELINE		ARCHEOLOGICAL RESOURCE PROTECTION		HIGHWAY COMMERCIAL		RESIDENTIAL THREE
	EXTRACTIVE INDUSTRIAL RESERVE (EMR)		TOWNSHIP ROAD		HYDRO		COMMUNITY FACILITY		GENERAL COMMERCIAL		RECREATIONAL COMMERCIAL
	CROWN LAND		SEASONAL, PRIVATE or CROWN ROAD		RURAL (RU)		DISPOSAL INDUSTRIAL ONE		SHOPPING CENTRE COMMERCIAL		SUBURBAN RESERVE
	HYDROGRAPHY		RAILWAY		NHF OVERLAY ZONE AREA OF NATURAL & SCIENTIFIC INTEREST (ANSI)		DISPOSAL INDUSTRIAL TWO		OPEN SPACE		TOURIST COMMERCIAL
			TOWNSHIP BORDER		EXTRACTIVE INDUSTRIAL		RURAL RESIDENTIAL		RESIDENTIAL ONE		URBAN RESERVE
					GENERAL INDUSTRIAL		RESIDENTIAL ONE		LIMITED SERVICE RESIDENTIAL		