

THE CORPORATION OF THE TOWNSHIP OF LAURENTIAN VALLEY

BY-LAW NUMBER 06-08-305

A By-law to Amend By-law Number 900-4-93, as amended, of the (former) Township of Stafford.

PURSUANT TO SECTION 34 OF THE PLANNING ACT, R.S.O. 1990, c.P.13, THE TOWNSHIP OF LAURENTIAN VALLEY HEREBY ENACTS AS FOLLOWS:

1. THAT By-law Number 900-4-93, as amended, of the (former) Township of Stafford is hereby further amended as follows:
 - (a) Schedule 'A' to By-law Number 900-4-93 of the (former) Township of Stafford is amended by rezoning lands located on TV Tower Road in Part of Lot 36, Concession I, in the geographic Township of Stafford, now in the Township of Laurentian Valley, more particularly described as part of Part 1 on Plan 49R-11081, from "General Commercial (GC)" to "Rural (RU)" as shown on Schedule "A" attached hereto.
2. THAT save as aforesaid all other provisions of By-law Number 900-4-93, as amended, of the (former) Township of Stafford, shall be complied with.
3. This by-law shall come into force and take effect on the day of final passing thereof.

Read a FIRST and SECOND time this 22nd day of August, 2006.


REEVE

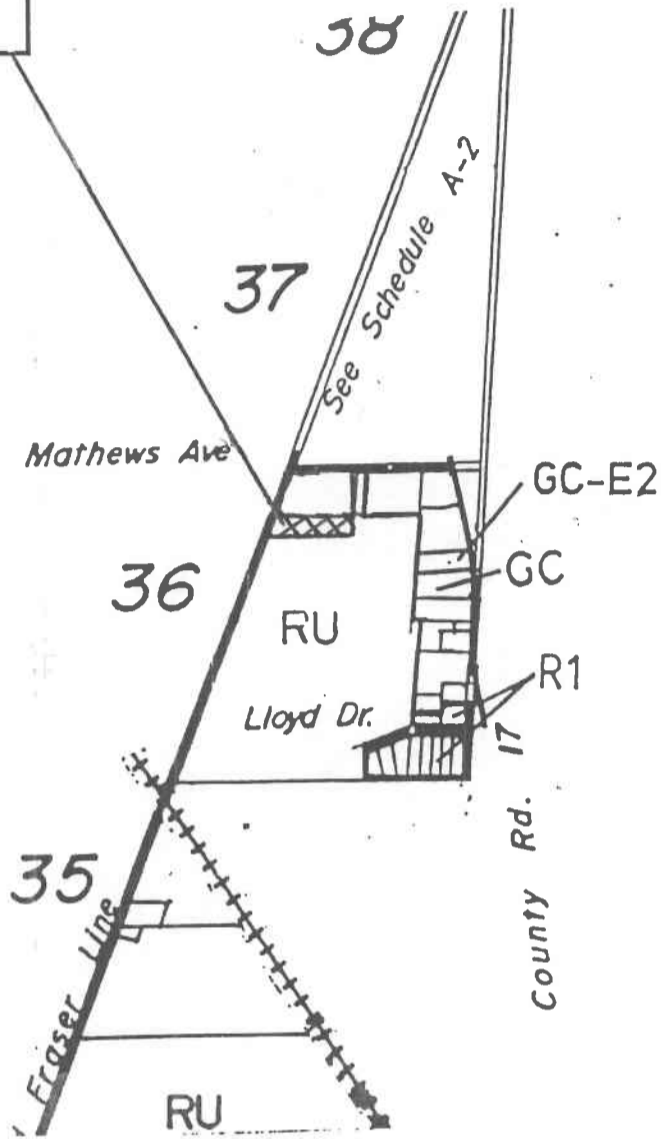

CHIEF ADMINISTRATIVE OFFICER/CLERK

Read a THIRD time and FINALLY passed this 22nd day of August, 2006.


REEVE


CHIEF ADMINISTRATIVE OFFICER/CLERK

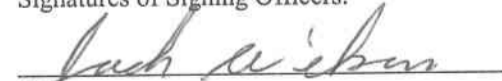
From GC
To RU




CORPORATION OF THE
TOWNSHIP OF LAURENTIAN VALLEY

This is Schedule "A" to By-law Number 06-08-305
Passed the 22nd day of August, 2006.



Signatures of Signing Officers:


Reeve


Chief Administrative Officer/Clerk

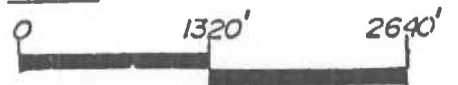
LEGEND

R1	Residential One
R2	Residential Two
R3	Residential Three
R4	Residential Four
GC	General Commercial
SC	Suburban Commercial
GM	General Industrial
EM	Extractive Industrial

	Extractive Industrial Reserve
A	Agriculture
RU	Rural
CF	Community Facility
	Environmental Protection (EP)
OS	Open Space
-h	Holding Zone (principle of development established)
-E1	Exception One (numbered consecutively for each respective zone classification) eg R1 E1, R1 E2, etc

Extractive Industrial Reserve
Agriculture
Rural
Community Facility
Environmental Protection (EP)
Open Space
Holding Zone (principle of development established)
Exception One (numbered consecutively for each respective zone classification) eg R1 E1, R1 E2, etc

SCALE



Area Affected By Amendment
From General Commercial (GC)
to Rural (RU)